



Seed Funding Project

Photo: USDAgov, Creative Commons

IPSI Collaborative Activity 3

# Satoyama Development Mechanism (SDM)



United Nations University Institute for the Advanced Study of Sustainability

**Yohsuke Amano**

# Voices from IPSI members

---

*We are facing a constant challenge of resource constraints*

*We want to initiate the project, but it is small scale and no need large fund*

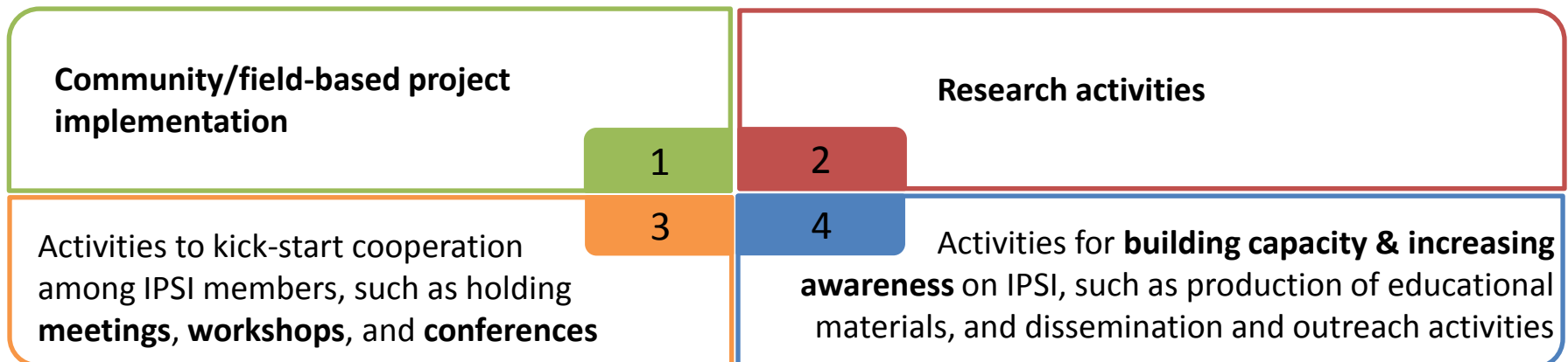
*We have poor experience to apply for funding*

*Too much paper work to apply and report*



# Overview of the SDM Project

- IPSI Collaborative Activity implemented by MoEJ, IGES, and UNU-IAS since 2013
- Three-fold objectives:
  - 1) *To promote the implementation of the IPSI Strategy and PoA*
  - 2) *To promote the development of model practice for living in harmony with nature*
  - 3) *To provide an incentive for IPSI members to strength partnership*
- Provide seed funding to promising projects proposed from **IPSI members**
- The amount of the grant is approximately **10,000 USD** per a recipient
- Maximum **6 projects** are selected each year
- **Four project types** for the scope of the projects





# **Case of Complete SDM Projects**

Photo: USDAgov, Creative Commons



# Experimenting on production of high value market products from indigenous wild fruits

Nature and Livelihood, Uganda



**Parkland farming** (traditional agroforestry system) is a cropping system practiced mainly in drylands of Africa whereby indigenous trees are retained in cropping when virgin land is opened up for farming.

However, Native vegetation outside protected areas is being rapidly lost to conversion to unsustainable practice of farming and the native fruit trees are cut and exploited for charcoal production.

Project aims to explore the potential to develop high value market products from native wild fruits by providing farmers an economic incentive to retain these trees in their farm land

## Fruits selection



## Nutrition Analysis



## Product formulation



# Hosting the Satoyama Initiative Regional Workshop in Peru

Asociacion ANDES, Peru



The Andes high mountain environments are among the most sensitive to climate change, causing significant impact on these landscapes, hindering conservation and development opportunities for future generations.

Project aims to explore the organization of the event to engage IPSI & non-IPSI in Latin and Caribbean region with shared value, a common agenda and deep understanding of and respect for biocultural diversity

**27-29 June 2016**



- Approx. 100 participants mainly from Latin America and Caribbean region
- 1.5 days of field session was conducted at the Potato Park in Pisac, Peru



# Supporting and Promoting the Karen Indigenous socio-ecological production system in Northern Thailand

Indigenous Knowledge and Peoples (IKAP), Thailand



Although the Karen's traditional livelihood system is recognized by the Ministry of Culture as an important heritage, their production system is placed under the threat of replacement due to commercial corn production

Project aims to strengthen Karen people's traditional production system that centered on traditional rotational farming

## Capacity Building

Community-based work plan



## Participatory Mapping



## Campaigning

sustainable rotational farming



Branding products



## Satoyama Initiative concepts to national and local context:

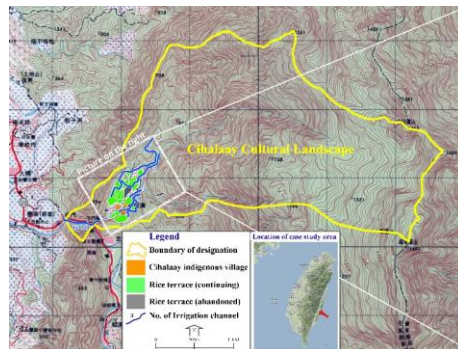
A case study of the collaborative planning process of a rice paddy cultural landscape in an indigenous community, Taiwan

National Dong-Hwa University, Chinese Taipei



The concept of landscape/seascape conservation was introduced into the amended Cultural Heritage Preservation Law of Taiwan in 2005. The Cultural Landscape is a new concept to Taiwan that emphasizes the interaction of local people and the land. In order to help stakeholders of governmental authorities and local communities to apply this new instrument, the researcher employs a community-based participatory approach to enhancing partnership among them.

Project aims to explore 1) to what extent the Satoyama Initiative framework can fit into the management plan of the rural cultural landscape and 2) what contribution a collaborative planning approach can make to reach consensus among different stakeholders in planning and management of SEPLs.



- Indigenous and local knowledge was documented
- Cihalaay Cultural Landscape site was officially inscribed
- Local management committee and code of conduct were established, and incorporated into the official Management Principles and Management Plan for the Cihalaay Cultural Landscape site



# **Contributions to the Aichi Target and SDGs**

Photo: USDAgov, Creative Commons

# Contributions to Aichi Biodiversity Targets

Project type	Recipient	Aichi Biodiversity Targets																				
		1	2	3	4	5	6	7	8	9	10	11	12	13	14	15	16	17	18	19	20	
Community/ field-based implementation	IKAP		■					■					■		■	■				■		
	KAFCOL	■	■												■				■	■	■	
	AERF	■			■	■		■					■		■							
	A Rocha Ghana	■				■		■							■	■				■		
	National Dong-Hwa University	■	■					■					■		■					■		
Research	Nature and Livelihoods			■				■						■								
	SWAN International	■		■	■			■	■													
	APAIC, Peru	■	■					■							■	■						
Capacity Building / Outreach	Center Zapovedniks	■											■							■		

■ Tangible outcome  
■ Relevant



# To which SDG can SDM projects contribute?



Project type	Recipient	SDGs																
		1	2	3	4	5	6	7	8	9	10	11	12	13	14	15	16	17
Community/ field-based implementation	IKAP, Thailand																	
	KAFCOL, Nepal																	
	AERF, India																	
	A Rocha Ghana																	
	National Dong-Hwa University, Taiwan																	
	SPERI, Viet Nam																	
	Conservation Alliance International, Ghana																	
Research	Nature and Livelihoods, Uganda																	
	APAIC, Peru																	
Partnership	ANDES, Peru																	
	Landcare Germany																	
	EPIC, Uganda																	
Capacity Building Outreach	Center Zapovedniks, Russia																	





# **Voices from SDM recipients**

Photo: USDAgov, Creative Commons

# Voices from SDM Recipients: Key Message

---

- Deep understanding on traditional knowledge, practices and way of life of rural communities should be the basis for the interventions for sustainable natural resource management (IKAP, Thailand)
- Biodiversity planning should start at local level to foster ownership towards project achievements (KAFCOL, Nepal)
- Conservation outside PAs is only possible if landowners appreciate its benefits, where necessary proved by modern science. (Nature and Livelihoods, Uganda)
- Promotion of sustainable use attracts stakeholders' attention to the effective management of human-influenced natural environment (Zapovedniks, Russia)
- Building skills of local communities, clearly focusing on sustainable use of biodiversity, is critical to achieve long term conservation goals (AERF, India)
- Participatory approach is key. Well informed and empowered communities can take steps to protect their environment (A Rocha Ghana)
- A landscape and participatory approach is welcomed by rural people and can create a new style of 'living' protected landscape into the national protected area system (14-3: National Dong-Hwa University, Taiwan)

# Voices from SDM Recipients

---

*SDM grant though small in size offered us the opportunity to pilot test new approaches which we think are important for sustainable management of SEPLs.*

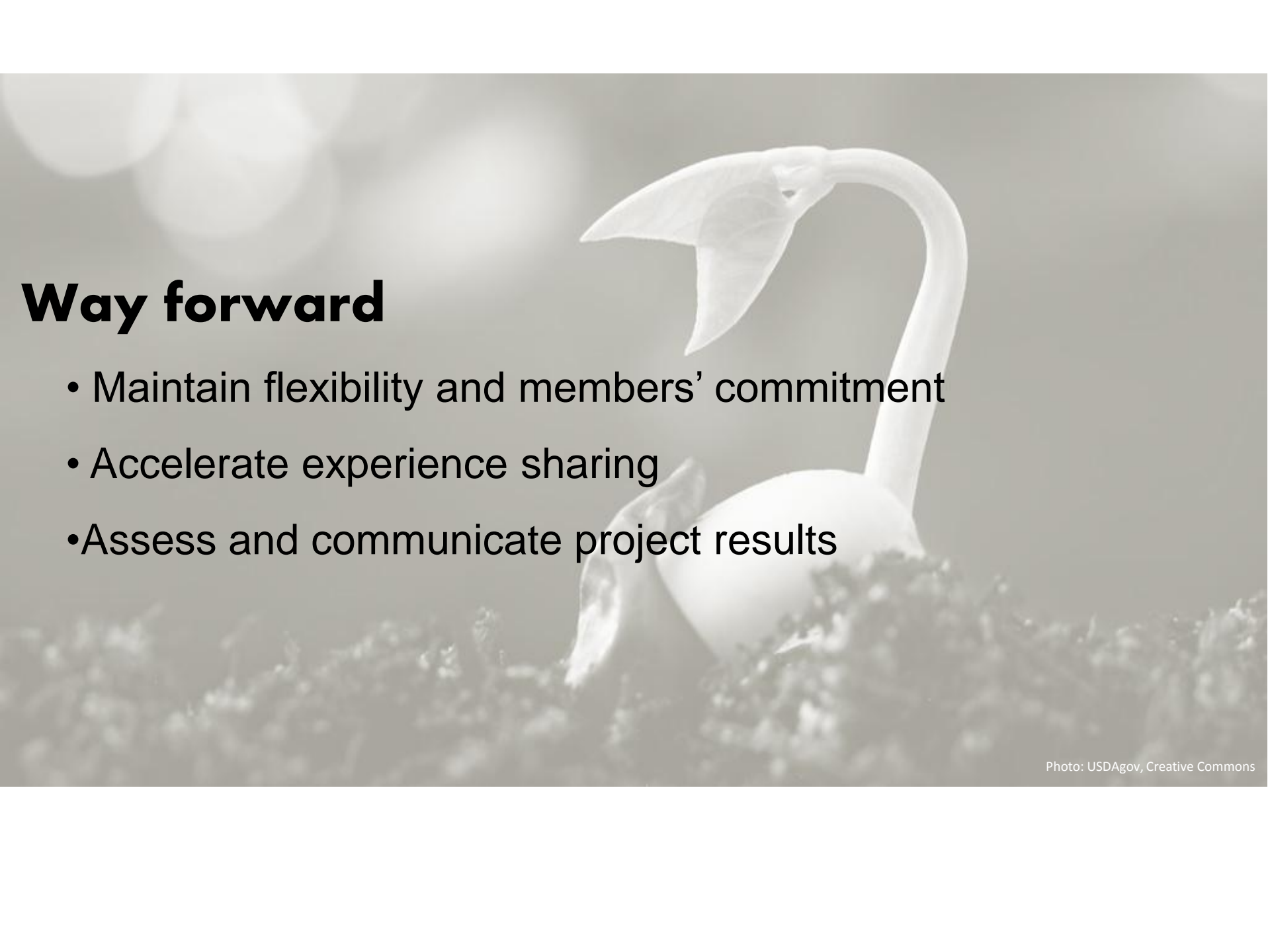
**Applied Environmental Research Foundation / India**

*The SDM grant has provided the organization with the rare opportunity to pilot test a monitoring framework. We could have faced difficulties in assessing funds from other donors because it's the first of its kind. While the funding is small, we are hopeful that the results will attract other donors to invest in the project.*

**Conservation Alliance / Ghana**

*Starting from good ideas and small projects, with the support of prestigious institutions like SDM, it is possible to generate big things and open new perspectives, among policy and decision makers*

**Asociasion Pro Desarrollo Agroindustrial de Camana / Peru**



## Way forward

- Maintain flexibility and members' commitment
- Accelerate experience sharing
- Assess and communicate project results



*Join us, IPSI!  
Thank you!*

