

**PROMOTING CATCHMENT
MANAGEMENT ACTIVITIES IN THE
MIDDLE SHIRE USING TRAINING AND
EXTENSION METHODS**

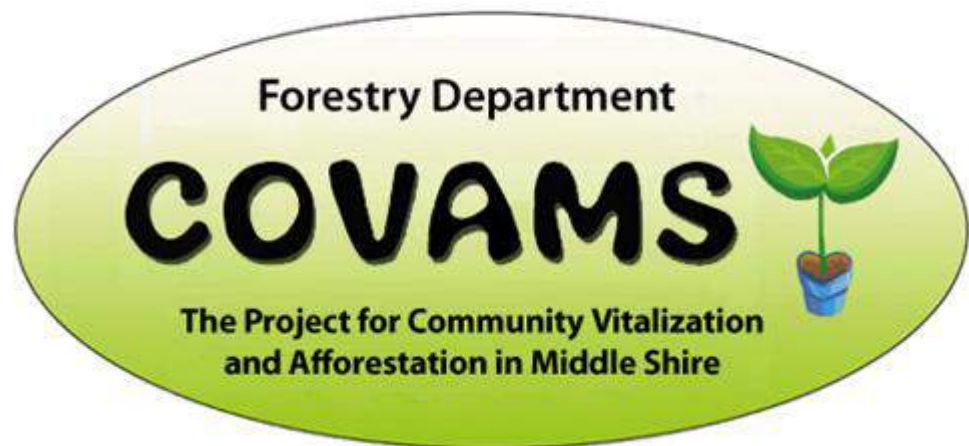
**PRESENTED AT THE SATOYAMA
REGIONAL WORKSHOP IN GHANA
10-12 AUGUST 2015**

**BY
CECILIA MPHATSO CHAULUKA**

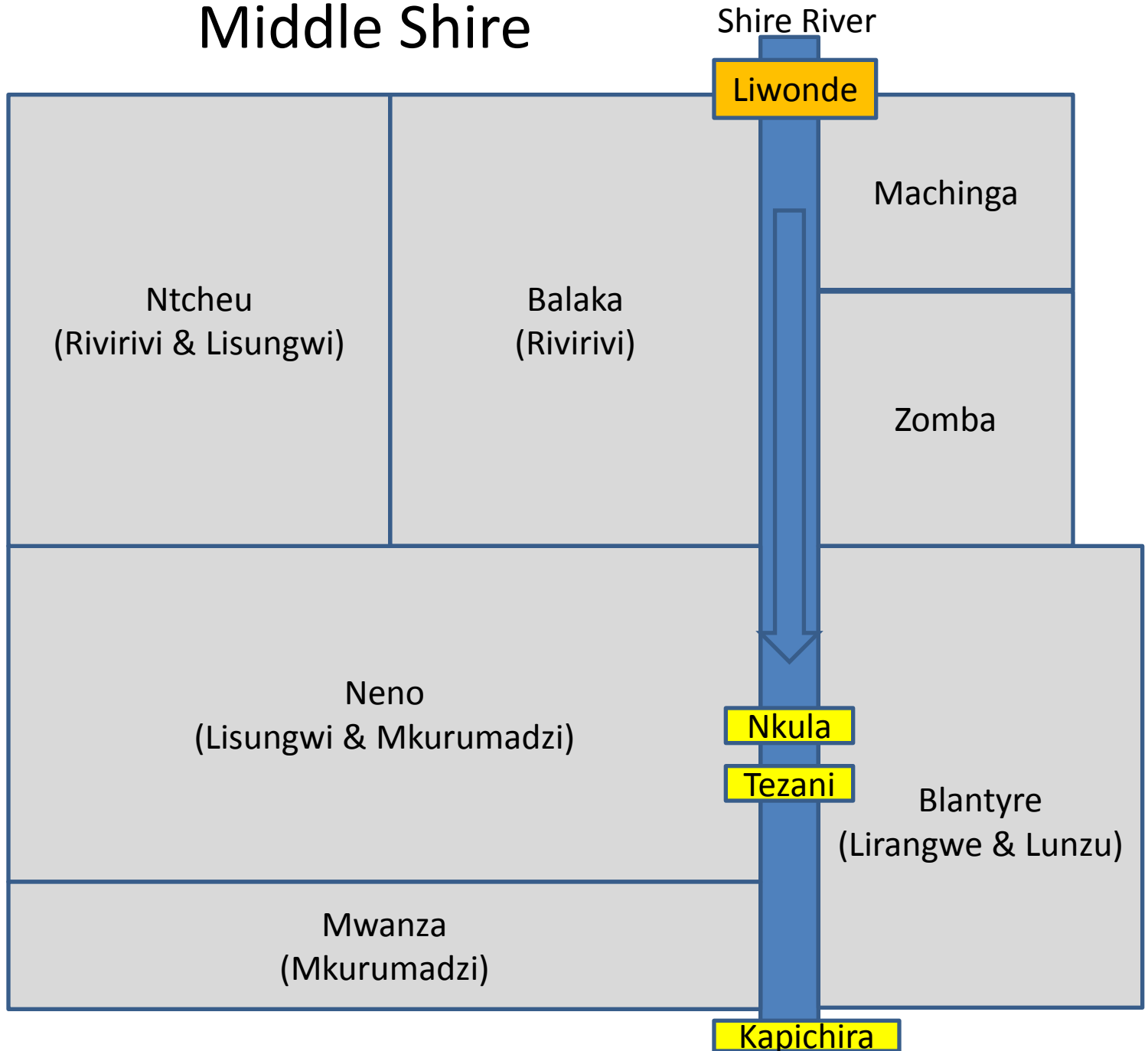
Background of the Project

- Project for Community Vitalisation and Afforestation in Middle Shire (COVAMS)
(From 2007 to 2012)

For Better Life Better Environment



Middle Shire

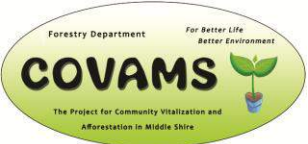






Training Approach

- Tree Growing (Seedling Production, Direct Sowing, Natural Regeneration, Soil Conservation (Ridge Alignment, Box Ridges, Contour Marker Ridges, Swales)
- Gully Control (Small Scale Check Dams; Sand Bags, Bamboos, Rocks and Logs)
- **INCOME GENERATION and SMALL BUSINESS:** Bee Keeping, Honey Processing, Vegetable Growing, etc.



Summary of 2011/2012 season					
Number of villages	244				
Households	33,583				
Extension staff	20				
Lead farmers	1,305				
Outputs			Impact		
Training subject	Frequency	Total attendance	Practice H/H	Achievement	
Contour ridge planting	1,545	24,046	9,367	2,376	ha
Small scale gully control	769	12,562	9,669	17,298	checks
Tree growing	1,456	21,808	25,440	461,655	trees
				318,783	planting holes

Success of COVAMS

- Honey Sales & Eating
 - ← Tree Growing and Income Generation
- Increase in Yields
 - ← Soil Conservation
- Provision of Crossing Point
 - ← Gully Control

Challenges in Extension

Promote catchment conservation

Larger area/Many people

Short time

Reasonable

cost

To cover all catchment area of Middle Shire 735,000 ha

Project for Promoting Catchment Management Activities

in Middle Shire

(COVAMS II)

(From 2013 to 2018)

For better life, better environment

COVAMS II



Project for Promoting Catchment
Management Activities in Middle Shire

Forestry Department

For better life, better environment

COVAMS II



Project for Promoting Catchment
Management Activities in Middle Shire
Forestry Department

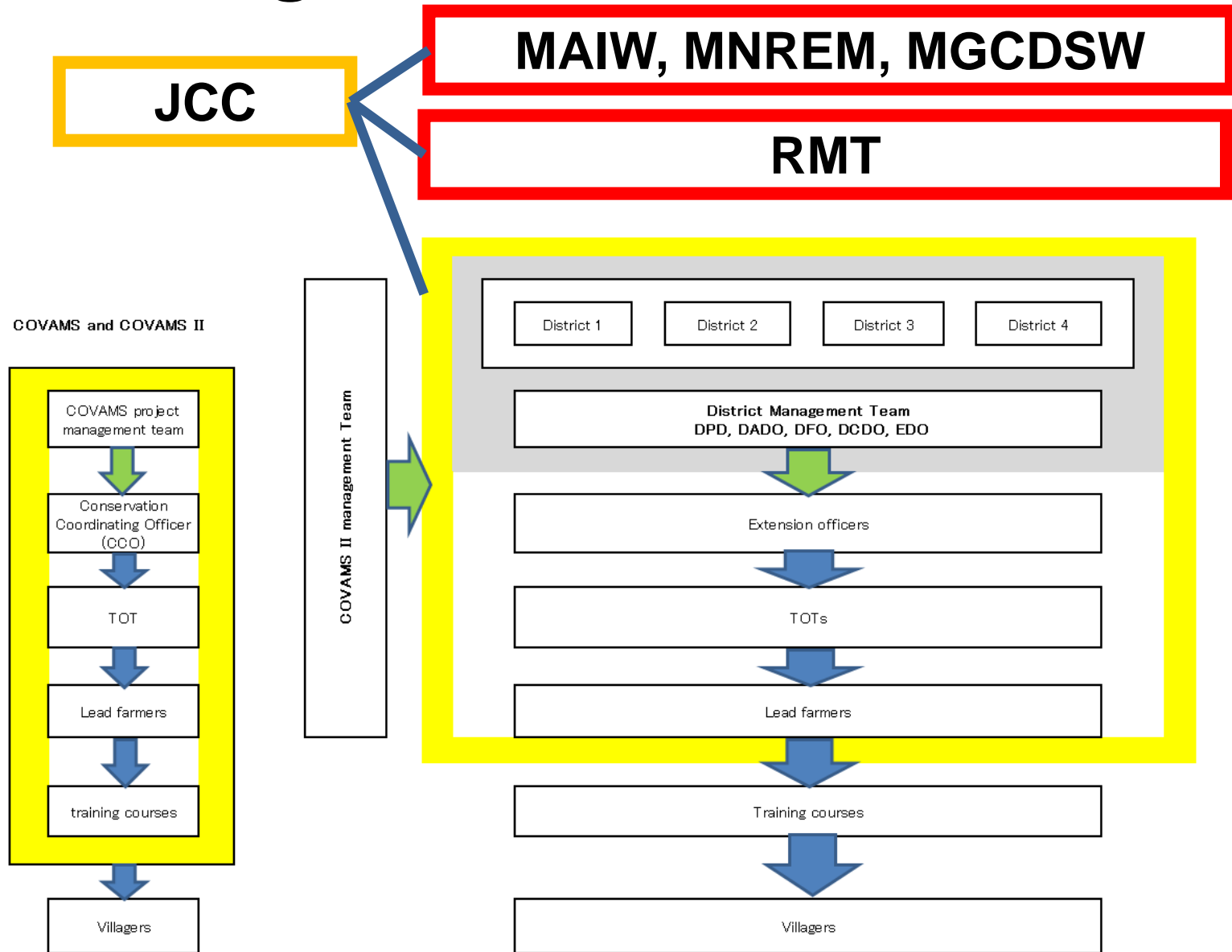
Policy



Action

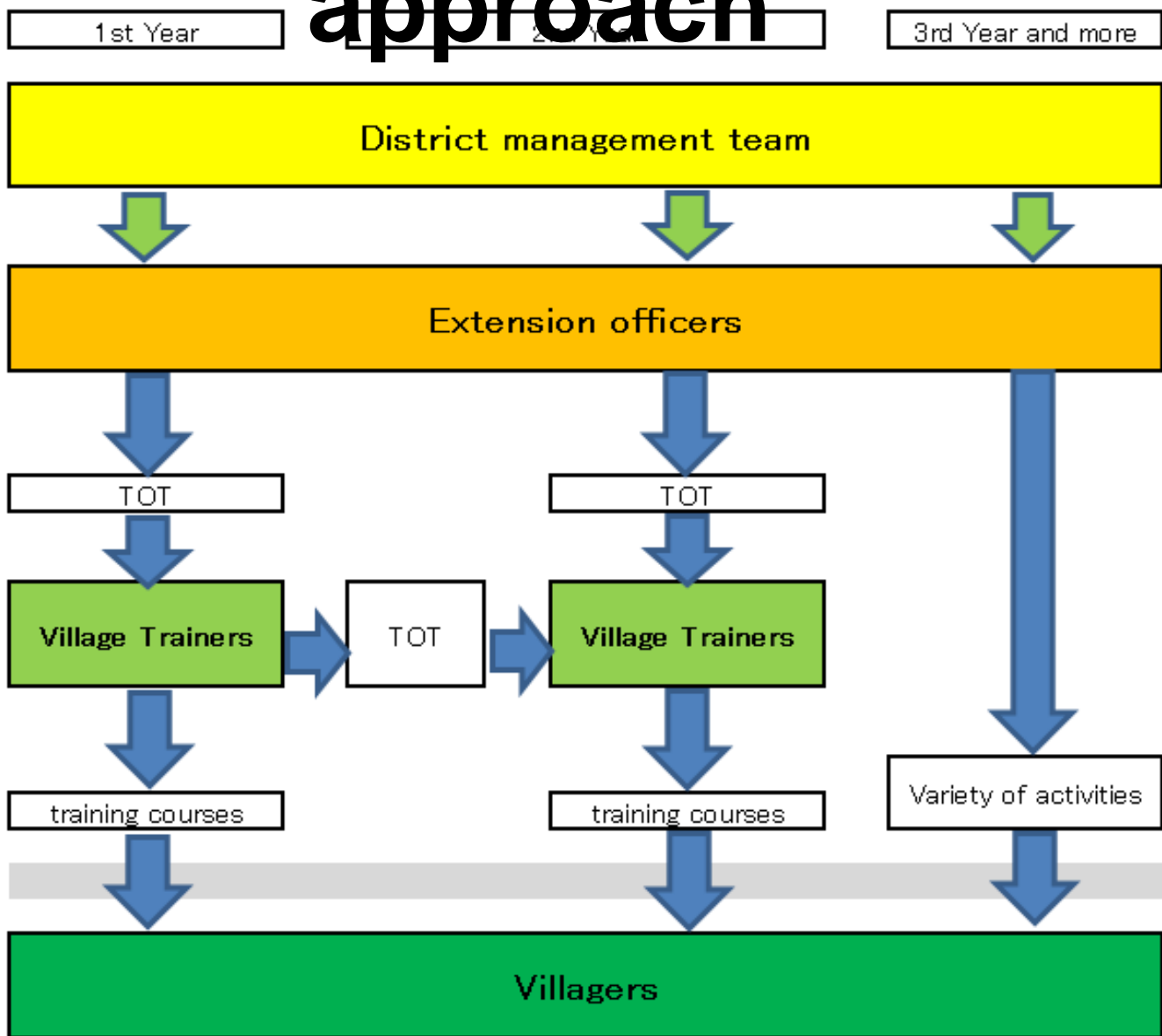
Extension

Organisation Structure





COVAMS approach



Techniques Involved in the COVAMS Approach

- Tree Growing



Techniques Involved in the COVAMS Approach

- Soil and Water Conservation



Techniques Involved in the COVAMS Approach

- Gully Control



Principles of Training within the Approach

- Utilise Local Instructors and resources
- Take place within a village
- Open to everyone
- Repeated to encourage many residents to participate

Achievement up to December, 2014

	Blantyre	Balaka	Mwanza	Neno	Total
Village targeted	37	60	37	38	172
Number of LFs & SLFs	600	300	310	490	1,700
HH targeted	8,807	4,466	4,586	7,199	25,058

Total Cost: MK21.9Million, MK12.9/ LF, →
MK873/HH Targeted

Challenges recognised

- Transfer of logistics management for operation
- Securing the operational cost
- Recognition by stakeholders

For better life, better environment

COVAMS II



Project for Promoting Catchment
Management Activities in Middle Shire
Forestry Department

Thank you

For Better Life, Better