



The First Global Conference of the
International Partnership for the *Satoyama* Initiative
Nagoya University, 11 March 2011



United Nations University's Activities on the Socio-ecological Production Landscapes

Kazuhiko Takeuchi
Vice Rector, United Nations University



United Nations University (UNU)



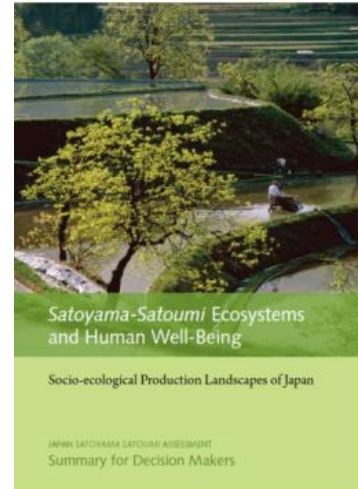
- Worldwide network of research and training institutes
- Undertakes research on a wide range of themes and topics of global concern by adopting holistic approach
- Has been conducting many research and other activities on socio-ecological production landscapes

Japan *Satoyama Satoumi* Assessment (JSSA)

- Coordinated by **UNU-IAS**
- **Assessment of current state of knowledge**
–a critical evaluation of information on the interaction between humans and ***satoyama and satoumi landscapes*** in Japan using the **MA** framework of **ecosystem services**
- Contributed by **200 plus** authors, stakeholders, and reviewers from Japan and abroad
- Defines ***satoyama and satoumi landscapes*** as “*dynamic mosaics of managed socio-ecological systems producing a bundle of ecosystem services for human well-being*”



Socio-ecological production landscape

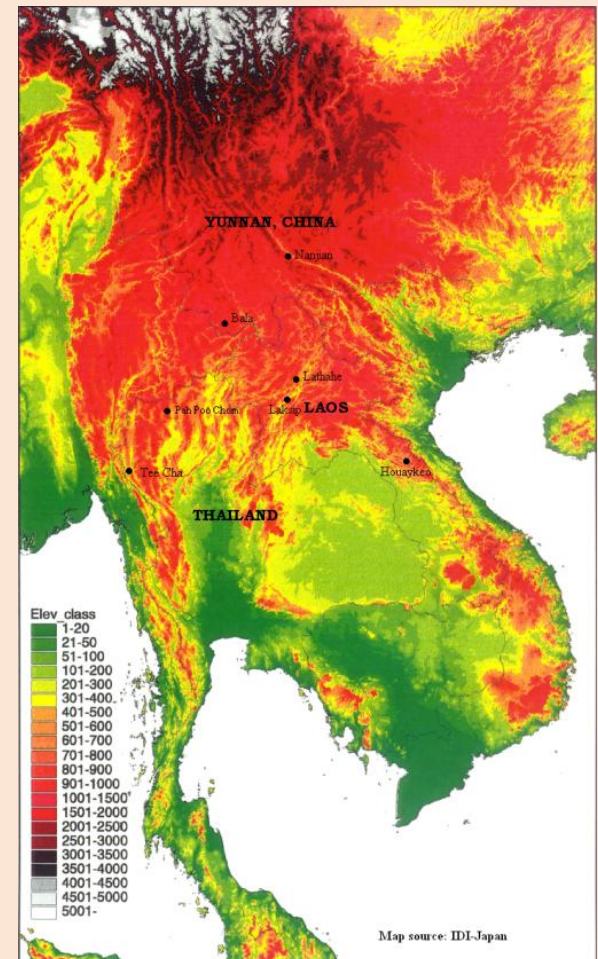


Sustainable Land Management in the mountainous region of mainland Southeast Asia (MMSEA)



SLM in Mountainous Region:

To create new knowledge and alternative options for harnessing and up-scaling local knowledge and actions with positive impacts on agricultural-forest ecosystems into implementation of sustainable development policies. These positive impacts include biodiversity conservation, carbon sequestration and livelihoods.



Knowledge Facilitation for the *Satoyama* Initiative

Knowledge Facilitation for the Satoyama Initiative

<UNU/SCBD/UNEP-WCMC>

Dissemination

- Case Study Report and other documents
- Capacity building activities (e.g. Regional Workshops by SCBD)
- IPSI Public Forum and other events

Analysis

- Understanding of SEPL
- Identification of ingredients of success
- Extraction of good practices and lessons

Collection

Website Database

Case studies

Examples from Relevant projects

Examples from IPSI activities

From IPSI members and other sources

COMDEKS

<UNDP/MOEJ/SCBD/UNU>

UNDP

Knowledge Management

Community Development

small grants making
e.g. GEF-SGP