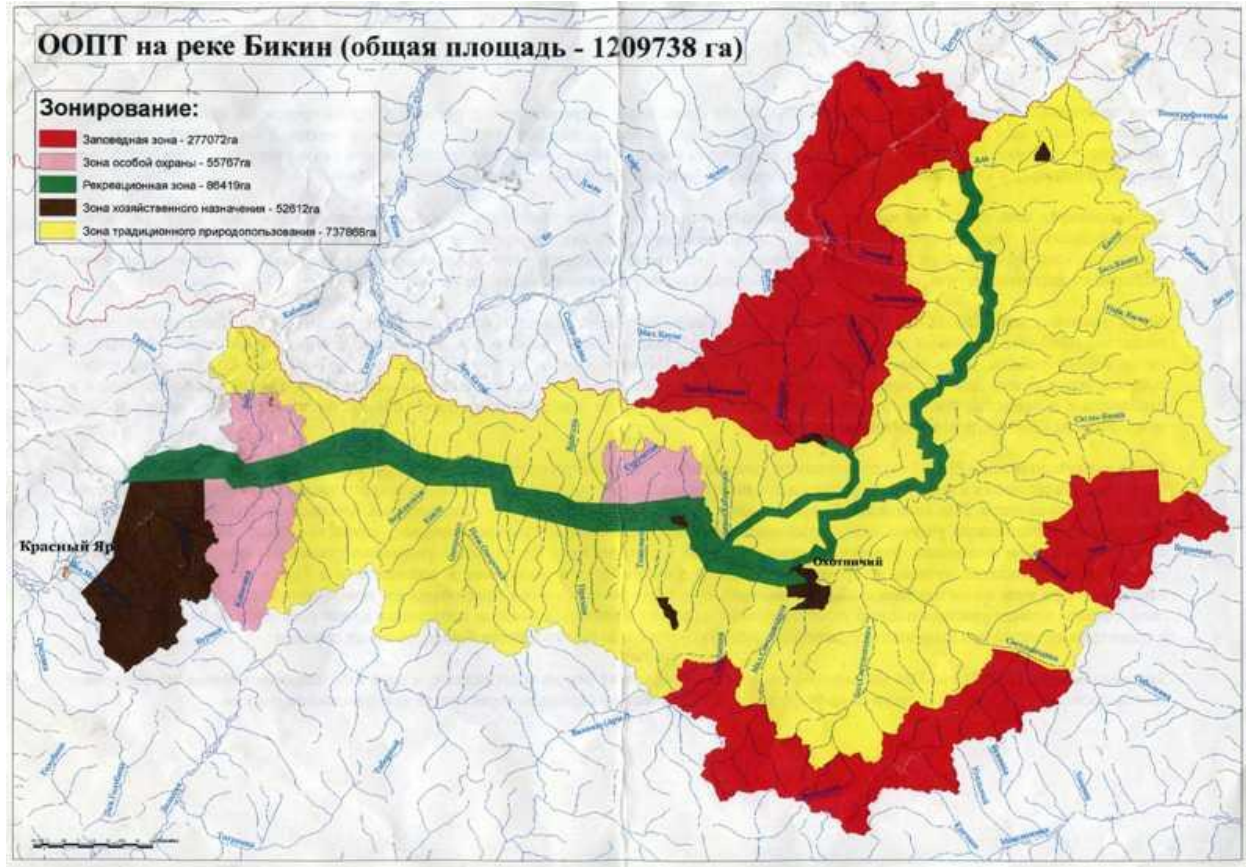


Increasing capacity of local forest and indigenous communities at the Russian Far East target to conduct efficient public control, protection and use of intact temperate forests



Anatoli Lebedev

Bureau for Regional Outreach Campaigns, BROCC



Barriers / challenges to mainstreaming the activities

- Hi conservation value of Ussuri Taiga – traditional home for indigenous udege tribes
- Low legal coordination between indigenous rights and conservation needs
- Involvement of Presidential Administration to change legislation BEFORE creation National Park BIKIN
- Creation of National Park WITHOUT change of legislation deepen mistrust between udege and Park Administration

How did you solve or what do you need to solve barriers / challenges?

- Broad long term media campaign target to support National Park as only way to stop poaching and ban logging forever
- Meetings with community to explain legal details of Park by-laws favorable for udege community
- Appeals from conservation NGOs to Government to speed-up and promote promised legal changes
- Use of existing public bodies under regional and national governments to activate legal changes

Recommendations

- To combine federal management of protected areas and indigenous rights in entire governmental body
 - To update legislation on Protected Areas and on Indigenous rights with clear providing land and resource rights for communities
- To update regulations on Protected areas management providing obligatory involvement of indigenous leaders into territorial and resource management
- To provide governmental support to media campaigning in favor of consensus building between indigenous and conservation communities