



Cercle pour la Sauvegarde
des Ressources Naturelles



*Au service
des peuples
et des nations*

Valorization of Genetic Resources and Traditional Knowledge for the Sustainable Management of Sacred Forests in Benin

BOSSOU Bienvenu /LOKOSSOU Orphée

CeSaReN NGO

E-mail: cesarenong@yahoo.fr

Plan

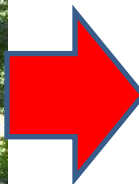
- Context and justification
- Objectives
- Activities implemented, outputs and lessons learnt
- Perspectives

Contexte and justification

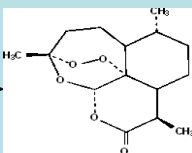
- In 2012, ITTO has financed a pre project PPD 165/12 Rev.1 (F) to collect the baseline information on sacred forests in Benin.
- Sacred Forests (SF) true reservoirs of biodiversity and traditional laboratories; they represent a successful model of traditional management and biodiversity conservation;
- Dignitaries and local communities are living libraries that hold Traditional knowledge (TK) ;
- Genetic Resources and TKA can offer both existing and potential markets for scientific research, development and marketing of pharmaceuticals, food, agricultural and industrial products;
- Erosion of genetic resources and the loss of Traditional knowledge Associated ;
- Fear of local people for the rub of their Traditional Knowledge ;

Context and Justification

- The Nagoya Protocol on Access and Benefit Sharing (ABS) from the use of genetic resources (GR) recognizes, supports and protects the rights of local population and communities to their traditional resources and knowledge (Art. 12 of the Protocol);
- The Nagoya Protocol on ABS creates legal security, clarity and transparency on ABS (Article 6, paragraph 3 (a)) where the establishment of a national framework ABS to involve communities
- NGO Ce.Sa.Re.N, with the support of UNDP (GEF SMALL GRANT PROGRAM) has decided to support a pilot project based on ABS approach for the sustainable management of two Sacred Forests (Gbévozoun and Gnahouizoun) that integrates the valorization of GR, practices and knowledge of the traditional system and modern sciences.



L'application du mécanisme APA peut aider à une transition efficace et profitable



Médicaments (CTA), bénéfiques pour les firmes et autres



Project Objectives

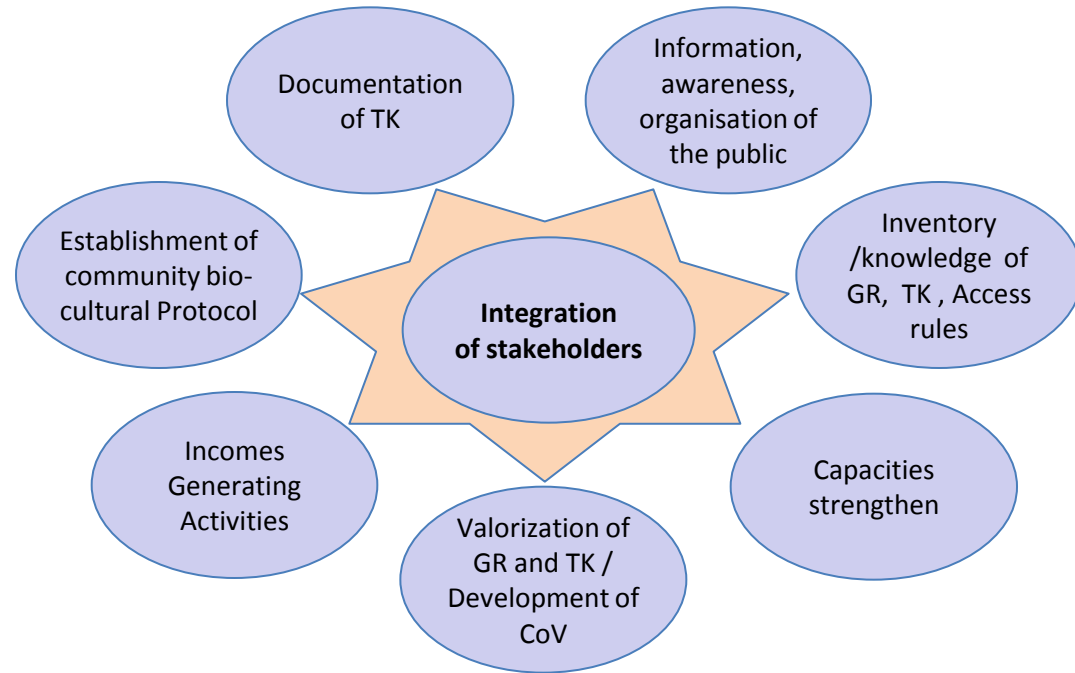
- **Objectif général :**

Strengthen conservation and sustainable use of Sacred Forest (SF) through of the Nagoya Protocol on Access and Benefit-Sharing from the use of genetic resources (ABS);

- **Specific Objectives**

- Strengthen the capacity of communities on Access and fair and equitable benefits sharing arising from the utilization of genetic resources (ABS).
- Strengthen the implementation of simple participatory management plans of two pilot sacred forests (Gbèvozoun and Gnahouizoun);
- Develop a Community biocultural protocols (PCB) in connection with the principles of the Nagoya Protocol on Access and Benefit-Sharing from the use of genetic resources (ABS).
- Increase the income of the owners of SF and TK through development activities and promotion of chain of value for some biogenetic resources (species) and TK basing on ABS mechanism.
- Ensure the efficient involvement of local communities in the implementation ABS process in Benin



Methodological approaches






Activities implemented and output

FIELD OF ACTIONS	ACTIVITIES IMPLEMENTED	OUTPUTS AND EFFETS
<p>INFORMATION, PUBLIC AWARENESS ORGANIZATION OF SARKEHOLDERS</p>  	<p>Project ownership by stakeholders through;</p> <ul style="list-style-type: none"> ✓ Development of information notes (leaflets) as standard support. ✓ Information and awareness of key stakeholders on the project and the main concepts (ABS, and implications for Local Communities, Bio-cultural Protocols, etc.) 	<ul style="list-style-type: none"> ✓ 350 participants in all socio-professional categories concerned: Good understanding of the Project, commitment and availability of stakeholders. ✓ 15 different categories of actors involved in the process ✓ 3 committees put in place and functional : (ABS committee, SF Management Committee, facilitators Group for PCB).

Activities implemented and output

FIELD OF ACTIONS	ACTIVITIES IMPLEMENTED	OUTPUTS AND EFFETS
<p>INVENTORY of TK, GR, Rules of Access</p>  	<p>04 Studies</p> <ul style="list-style-type: none"> ➤ Mapping of communities ➤ Inventory of GR and TK ➤ Analysis of resources access modes of the 2 Sacred Forest ➤ Identification of GR and TK of high potentiality 	<p>2 Reports on the description of local communities, their perception of the region and their impact on 2 FS (NTFPs)</p> <p>01 Directory GR 1 and TK on the FS</p> <p>GBEVOZOUN: 256 species of which 75 (or 29.30%) are encountered only in the sacred forest. 61 diseases or sickness treated 01 Directory on GR and TK on the FS available</p> <p>GNAHOUIZOUN: 168 species of which 81 (or 48.21%) are encountered only in the sacred forest 35 pathologies or sickness treated</p> <p>Lessons learned:</p> <ul style="list-style-type: none"> • Heavy reliance of populations on traditional medicine. • High exploitation of medicinal biogenetic resources: Risk of extinction of some species already on the national red list.

Activities implemented and output

FIELD OF ACTIONS	ACTIVITIES IMPLEMENTED	OUTPUTS AND EFFETS
<p>VALORISATION of RG and TKA, and Development of Chain of values</p>  	<p>Identification of incomes (GR and TKA) of high useful potential</p> <p>Partnership with the National Scientific Research Centre (CBRST)</p> <p>Analysis of the effectiveness of products traditional medical product by CBRST basing on WHO criteria</p> 	<p>A Directory of 32 medical plants species that can be promoted is available</p> <p>collaboration / partnership Agreement between the Laboratory of Pharmacognosy Research Institute and Experimental Medicine and Traditional Pharmacopeia (IREMPT) of CBRST</p> <p>25 products based on GR and TKA are certified MT</p> <p>GR 1 and TKA (the miraculous plant Agreement enters APA for commercial research with foreign Laboratory (CoS)</p> <p>Pharmacological and toxicological dossiers of 32 products prepared (IREMPT and the Laboratory of</p>

Activities implemented and output

FIELD OF ACTIONS	ACTIVITIES IMPLEMENTED	OUTPUTS AND EFFETS
------------------	------------------------	--------------------

STRENGTHENING TECHNICAL CAPACITIES



Training on value chains and protective processes of RG and CTA

Training of local communities on the negotiations in the framework APA (General information on negotiation skills)

Facilitator training on driving the development of PCB process



4 training documents

Practitioners of traditional medicine (PTM) have been trained on the essential concepts on manufacturing guidelines (from the plant to the drug) and commercial forms of presentation of products to attract consumers


Facilitators are equipped to lead the development of BCP (Documents guides and Toolbox)

IMPACTS:

Contribution by the project:

- New initiatives against poverty not included in the FMP
- Creating new horizon perspective possible for a better valuation of their revenue beyond the simple production of drugs.

Activities implemented and output

FIELD OF ACTIONS	ACTIVITIES IMPLEMENTED	OUTPUTS AND EFFETS
<p>STRENGTHENING FINANCIAL CAPACITIES</p> 	<p>Negotiation of partnership with a specialized microfinance organization based in the locality to support the Stakeholders</p>	<p>-A partnership agreement with CREP to ensure funding and sustainability of the project results.</p> <p>A first disbursement of 2 millions CFA (4 thousands US \$) is done .</p>
<p>ELABORATION OF BCP DOCUMENTATION OF TK</p> 	<p>Development toolbox / Support</p>	<p>Communities know the BCP, how to develop and use them.</p> <p>1 guideline for data collection is available</p>

Perspectives

- ❖ Continue the development of BCP;
- ❖ Consolidate outputs in technical capacity reinforcements through retraining on major themes Project (negotiation, valorization of GR and TKA, etc.)
- ❖ Monitor the process for ABS agreements on the miraculous specie and TKA
- ❖ Duplicate this experience in others sacred forests
- ❖ Find financing for the project PD 754/14 Rev.2 (F):
Rehabilitation and sustainable management of sacred forests on the RAMSAR Sites 1017 AND 1018 in BENIN



**THANK FOR YOUR KIND
ATTENTION**